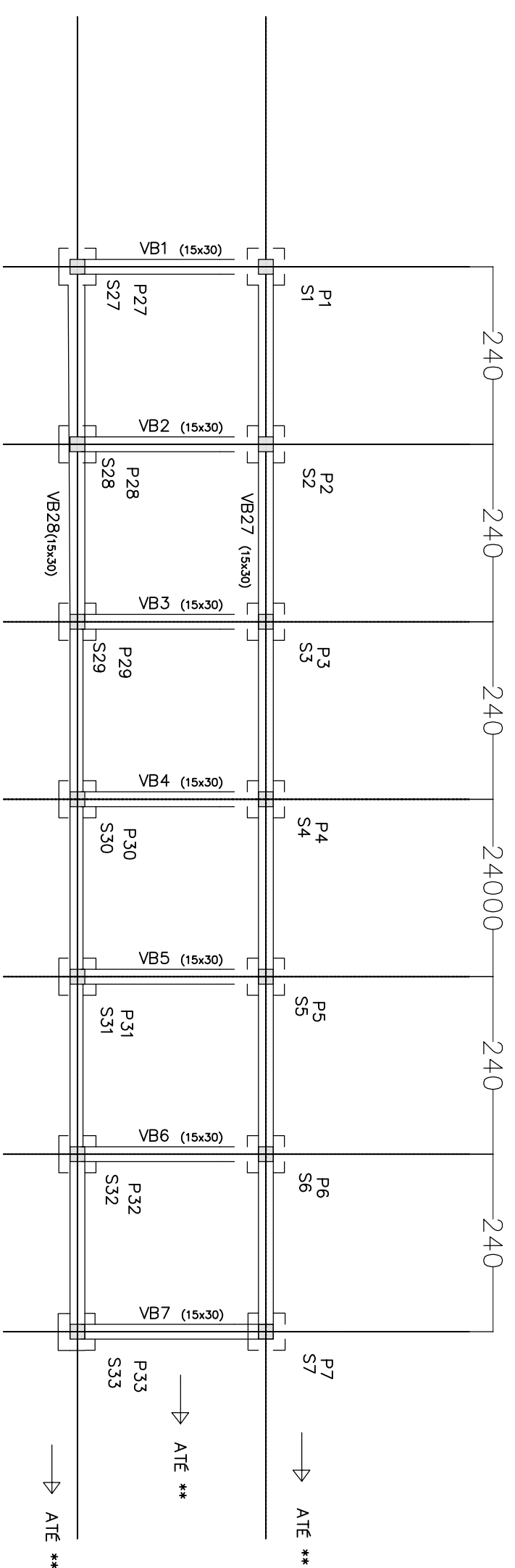
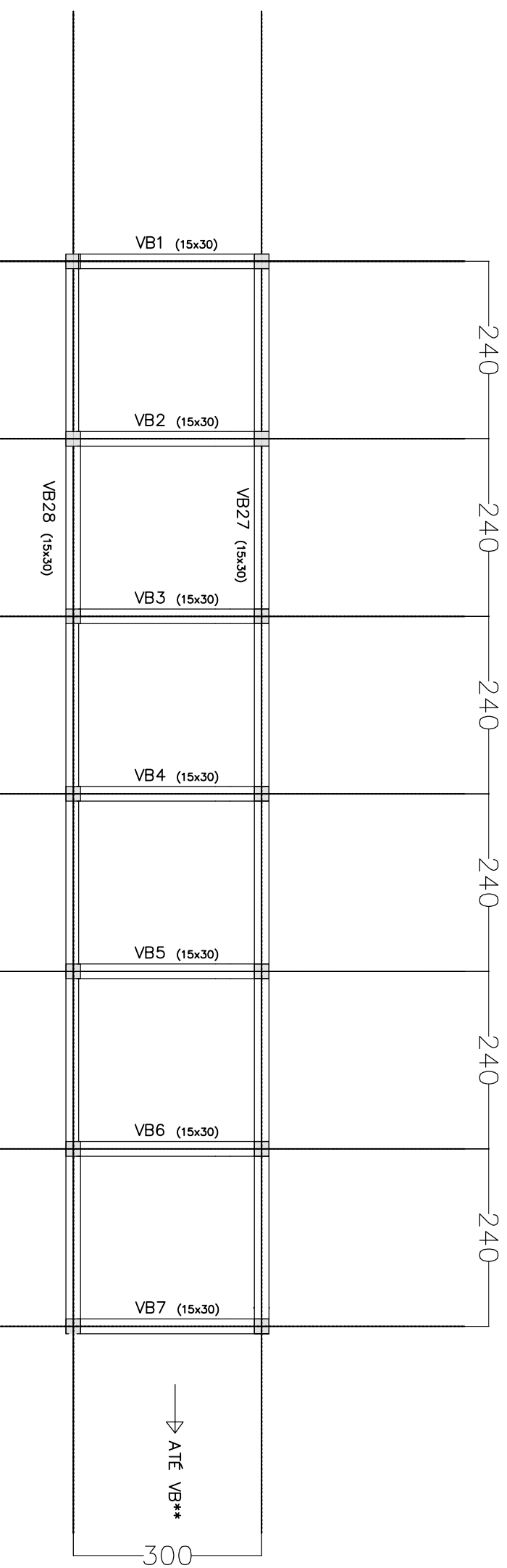


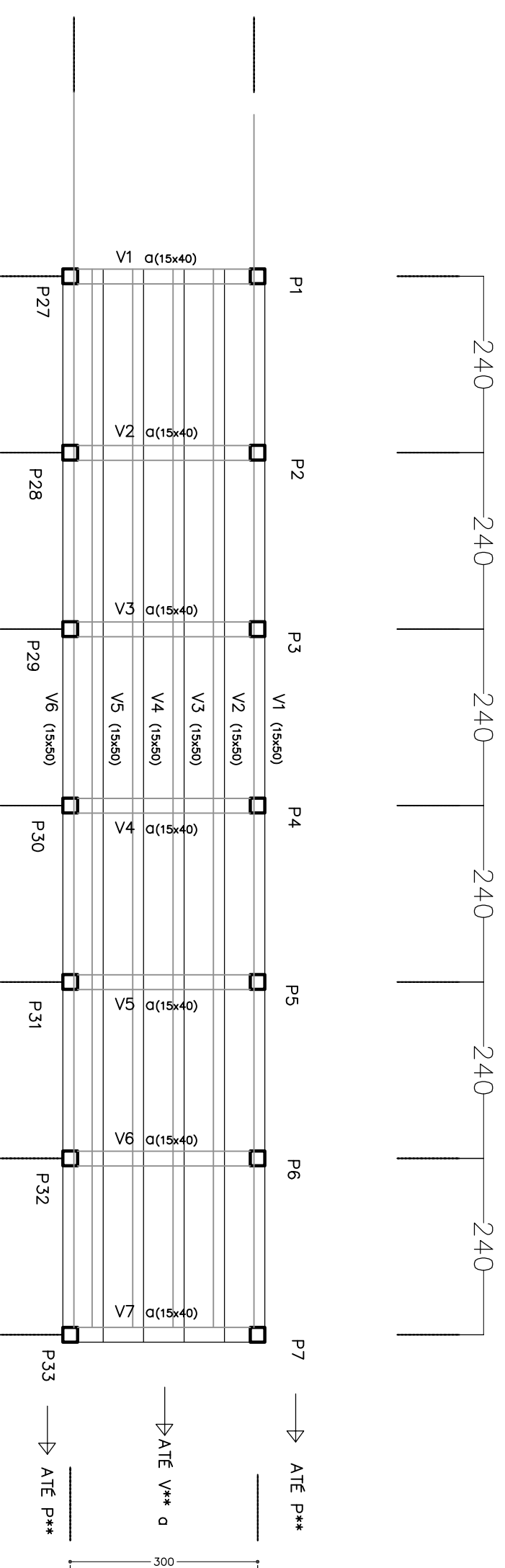
LOCAÇÃO DAS SAPATAS E PILARES



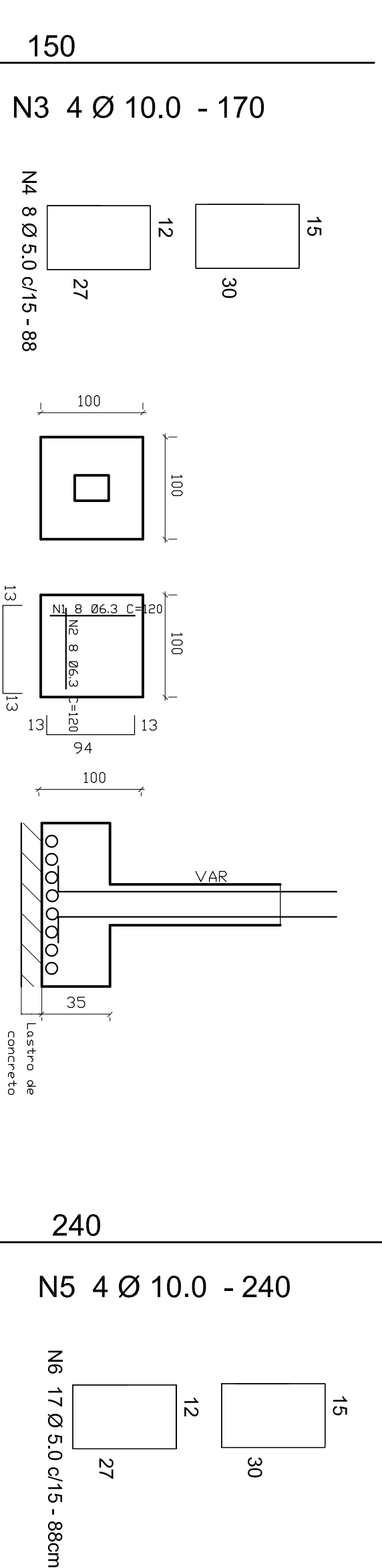
LOCAÇÃO - VIGAS BALDRAME



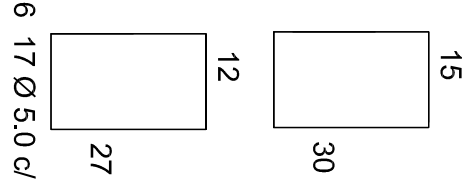
LOCAÇÃO - ESTRUTURA



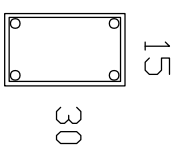
FUNDAÇÕES E ARRANQUES DOS PILARES



PILARES P A P



DETALHE DE VIGAS BALDRAMES



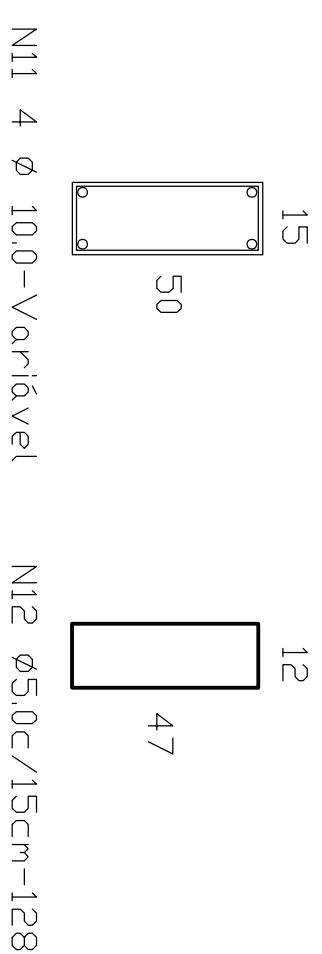
N7 4 Ø 10.0-VARIABEL N8 Ø5.2C/15-88

DETALHE DE VIGAMENTO INCLINADA (26 X)

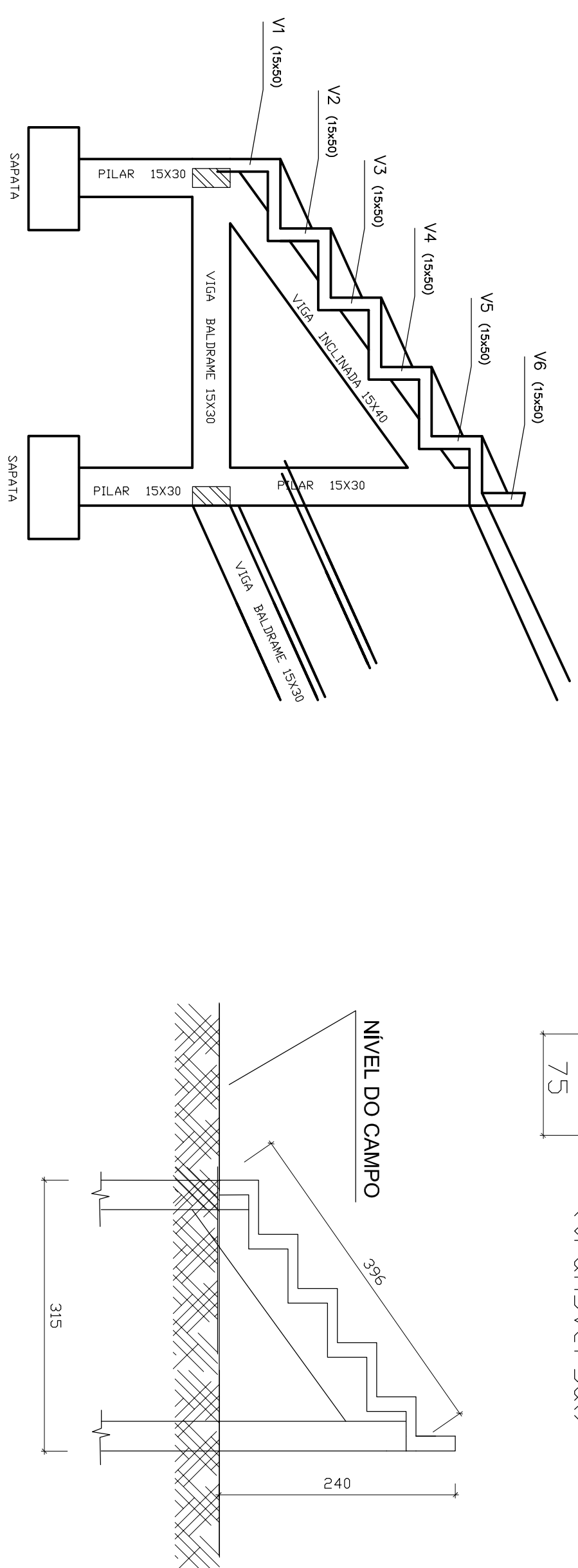
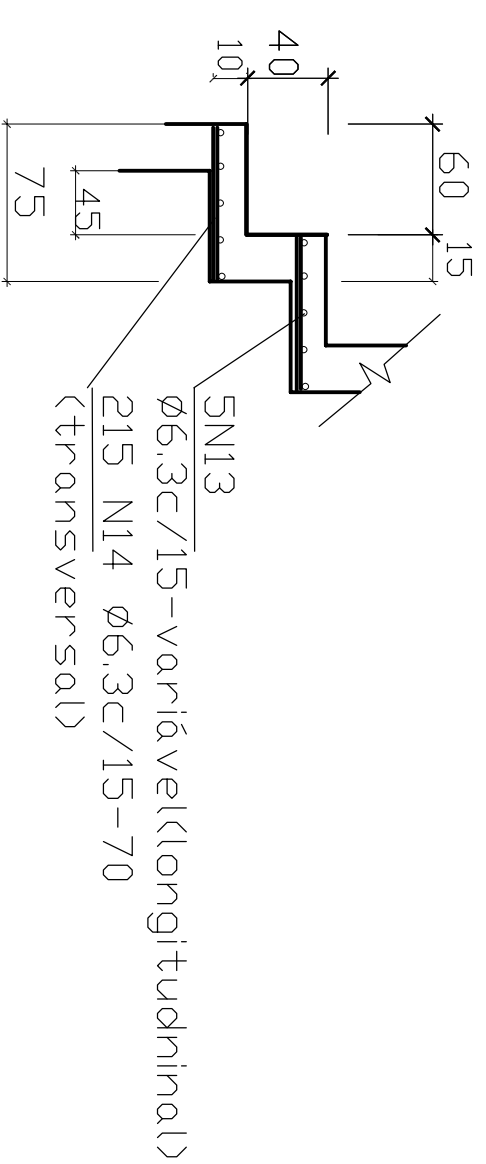


N9 6 Ø 10.0-396 27 N10 Ø5.0c/15-108

DETALHE - VIGAS HORIZONTAIS (6 X)



DETALHE ARMAÇÃO DA LAJE



Responsável Técnico	Título	Data	Esc. INDICADAS
CRISTIANO DE OLIVEIRA FERRARI Engenheiro Civil CREA MG 148.967/D	Reforma de Estádio Municipal Cota Martins	21/01/2022	
	Endereço Município de Orlatórios – MG	Folha 02/02	
Proprietário	Conteúdo PLANTA BAIXA		